

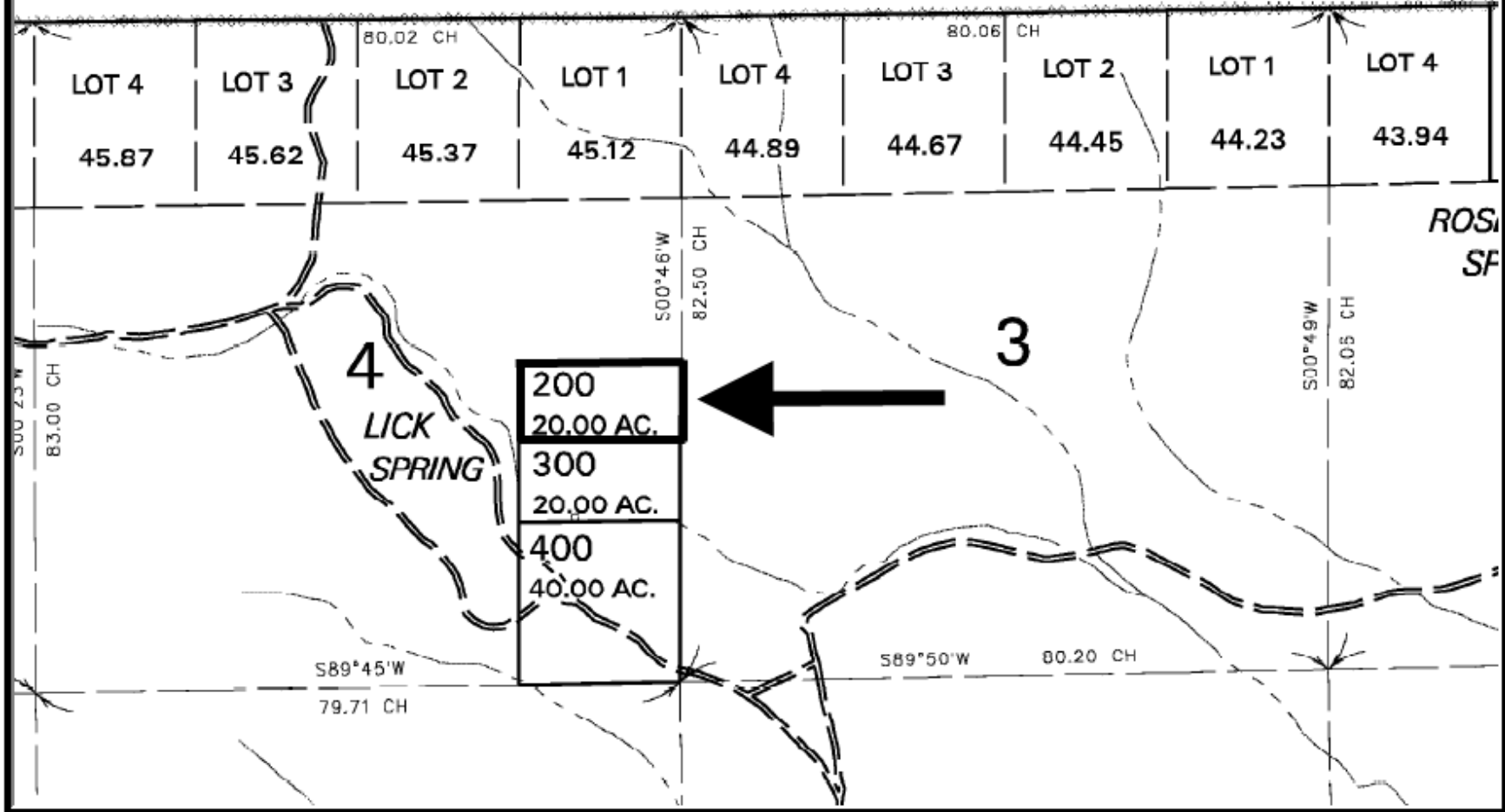
Item # 11

Harney County, Oregon
APN: 38-29-00-00200 #20074

T.38S. R.29E. W.M. HARNEY COUNTY

1" = 2000'

SEE MAP 37 29



This is a copy of an county tax map. The Seller and Auctioneer makes no warranties regarding; map accuracy, land use restrictions, legal or physical access, road improvements, or any lack thereof. Personally inspect the parcel prior to the auction.