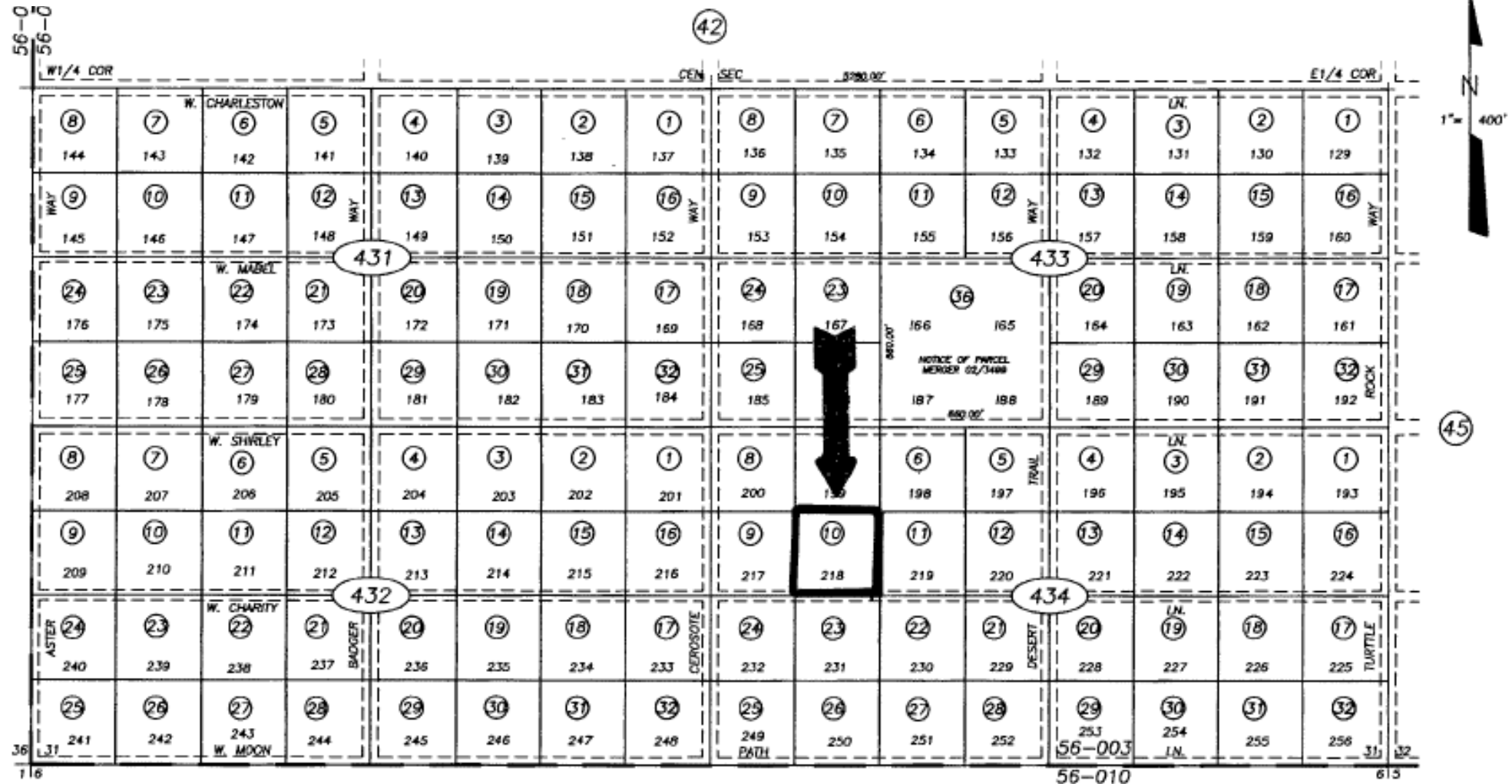


# Item # 34

Inyo County, California  
APN: 048-434-10

S.1/2 SEC. 31 T.22N., R.10E., S.B.B. & M.  
SPRING VALLEY RANCHOS

TAX RATE AREA  
56-003



R.S. Bk. 7 Pg. 40

EACH LOT IS APPROX. 330x330, 2.5 AC., PRIOR TO ROAD RESERVATIONS.  
ROADS ARE 60 FT. ON SEC. LINES AND 1/4 SEC. LINES, ALL OTHERS 40 FT.  
UTILITY ESMT. 10 FT. AT REAR OF EACH LOT.

NOTE: 1. THIS DOCUMENT WAS PREPARED FOR ASSESSMENT PURPOSES ONLY.  
2. NO LIABILITY IS ASSUMED FOR THE ACCURACY OF THE DATA SHOWN.  
3. ASSESSOR'S PARCELS MAY NOT COMPLY WITH LOCAL LOT-SPLIT OR BUILDING SITE ORDINANCES.

Assessor's Map Bk. 48 Pg. 43  
County of Inyo, Calif.

1966 02-04-03  
09-12-02

This is a copy of an county tax map. The Seller and Auctioneer makes no warranties regarding; map accuracy, land use restrictions, legal or physical access, road improvements, or any lack thereof. Personally inspect the parcel prior to the auction.