

# Item # 33

Ventura County, California

APN: 003-0-105-535 and 003-0-105-555 and 003-0-105-565

1/2, 1/4, 3/4, SECTION 28 T.8N., R.21W.

Tax Rate Area  
~~62008~~  
60001

3-10



Ventura, CA, 2006-2007 - 003-0-105-5

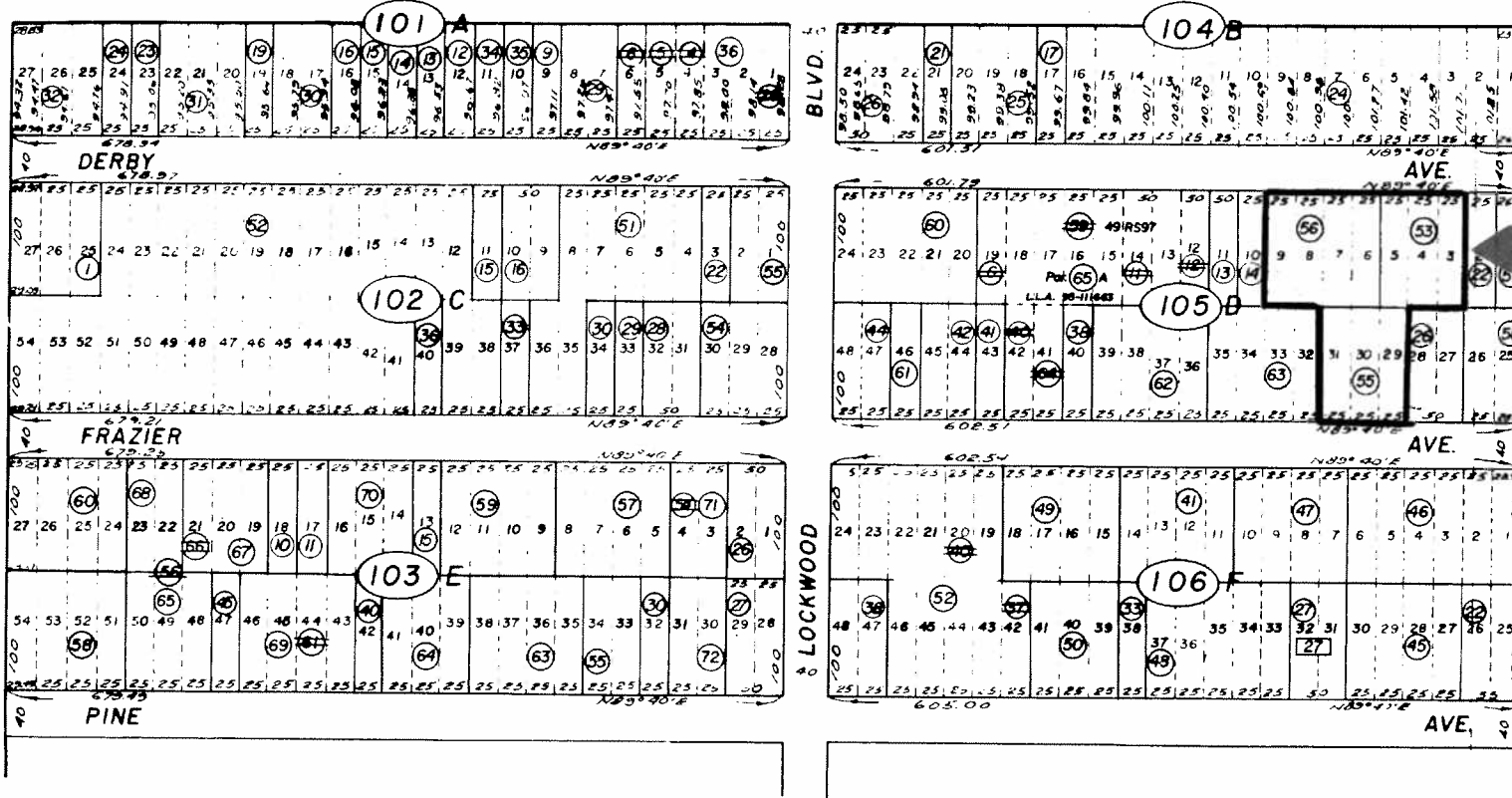
23

23

23

14

11



Portion Lockwood Park Tract No.1, M.R. Bk.11, Pg.51

### UNINCORPORATED AREA Ventura County Assessor's Map.

Assessor's Block Numbers Shown in Ellipses.  
Assessor's Parcel Numbers Shown in Circles.  
Assessor's Mineral Numbers Shown in Squares.

NOTE: ASSESSOR PARCELS SHOWN ON THIS PAGE  
DO NOT NECESSARILY CONSTITUTE LEGAL LOTS.  
CHECK WITH COUNTY SURVEYOR'S OFFICE OR  
PLANNING DIVISION TO VERIFY.

DRAWN	REVISED	8-3-2004
REDRAWN	CREATED	
INKED	PLOTTED	EFFECTIVE
		ROLL
Compiled By Ventura County Assessor's Office		

Roll-Year 05-06	BK. 003 , PG. 10	REVISION LOG
DATE REFERENCE DOC.	EXPLANATION Description	
8/27/2004	Code 403 TRM 60001	VOID A.P.N.(S)
	Item No. 1 (05-06)	RESIDUAL A.P.N.(S)
		NEW A.P.N.(S)

This is a copy of an county tax map. The Seller and Auctioneer makes no warranties regarding; map accuracy, land use restrictions, legal or physical access, road improvements, or any lack thereof. Personally inspect the parcel prior to the auction.