

171 Item # 31

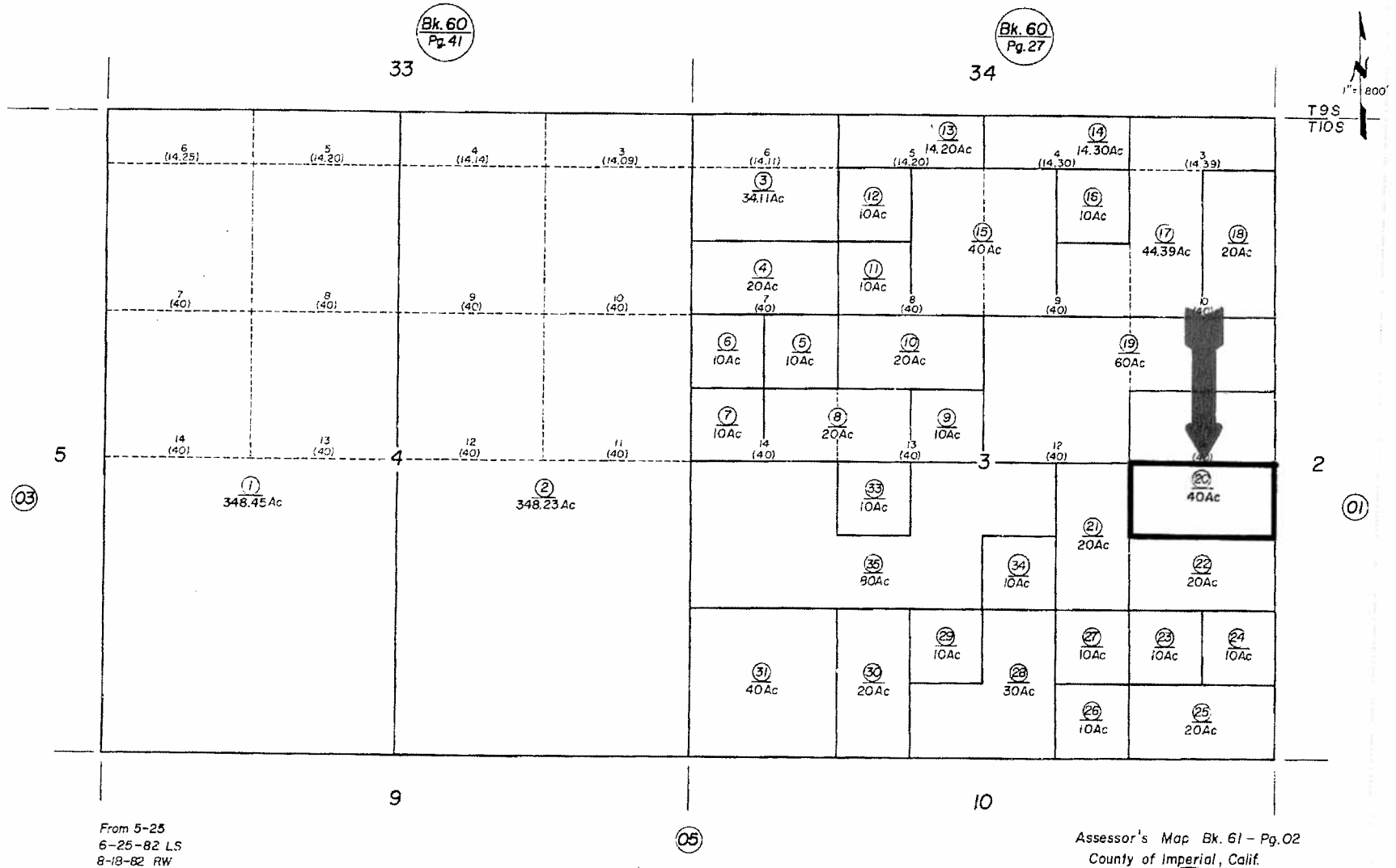
Imperial County, California
APN: 061-020-020-000

SEC 3 & 4 TIOS, R18 E

Tax Area Code
94-002

61-02

Imperial, CA, 2006-2007 - 061-020-020-000 (Alt: 061-020-20-01).



From 5-25
6-25-82 LS
8-18-82 RW

This is a copy of an county tax map. The Seller and Auctioneer makes no warranties regarding; map accuracy, land use restrictions, legal or physical access, road improvements, or any lack thereof. Personally inspect the parcel prior to the auction.