

Item # 13

Santa Cruz County, California

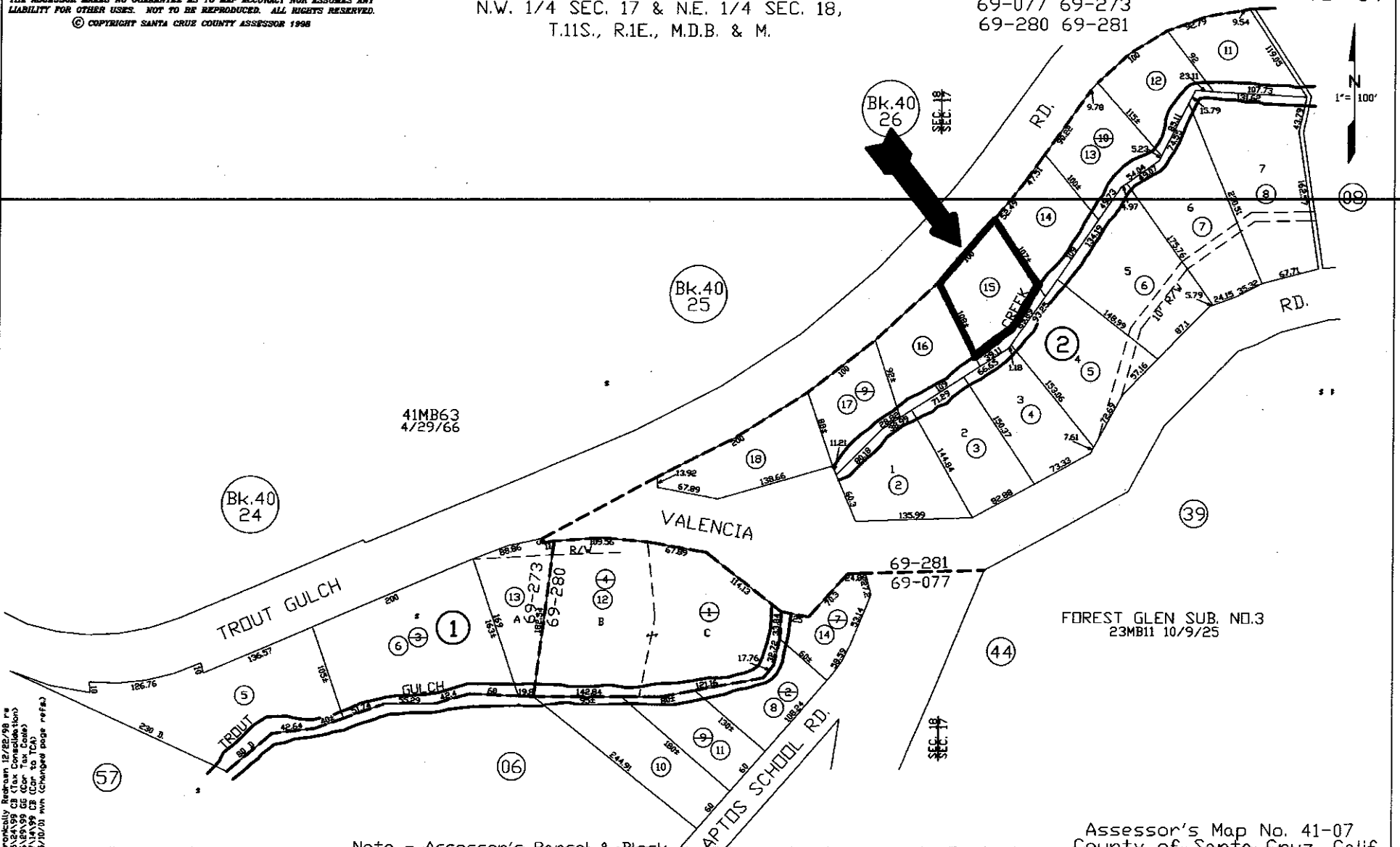
APN: 041-072-15

THE ASSESSOR MAKES NO GUARANTEE AS TO MAP ACCURACY NOR ASSUMES ANY LIABILITY FOR OTHER USES. NOT TO BE REPRODUCED. ALL RIGHTS RESERVED.
© COPYRIGHT SANTA CRUZ COUNTY ASSESSOR 1998

POR. APTOS RANCHO
N.W. 1/4 SEC. 17 & N.E. 1/4 SEC. 18,
T.11S., R.1E., M.D.B. & M.

Tax Area Code
69-077 69-273
69-280 69-281

41-07



41MB63
4/29/66

Bk.40
24

Bk.40
25

Bk.40
26

FOREST GLEN SUB. NO.3
23MB11 10/9/25

Assessor's Map No. 41-07
County of Santa Cruz, Calif.
Dec. 1998

Note - Assessor's Parcel & Block
own in Circles.

Formally Repealed 12/25/98 P#
SABV99 06 (Use Tax Collection)
SABV99 05 (Cor. to TCA)
SABV99 03 (Cor. to TCA)
9/10/01 Min (changed page refs.)

This is a copy of an county tax map. The Seller and Auctioneer makes no warranties regarding; map accuracy, land use restrictions, legal or physical access, road improvements, or any lack thereof.