

169 Item # 52

Lee County, Florida
 APN: 25-43-23-C2-02332-0220

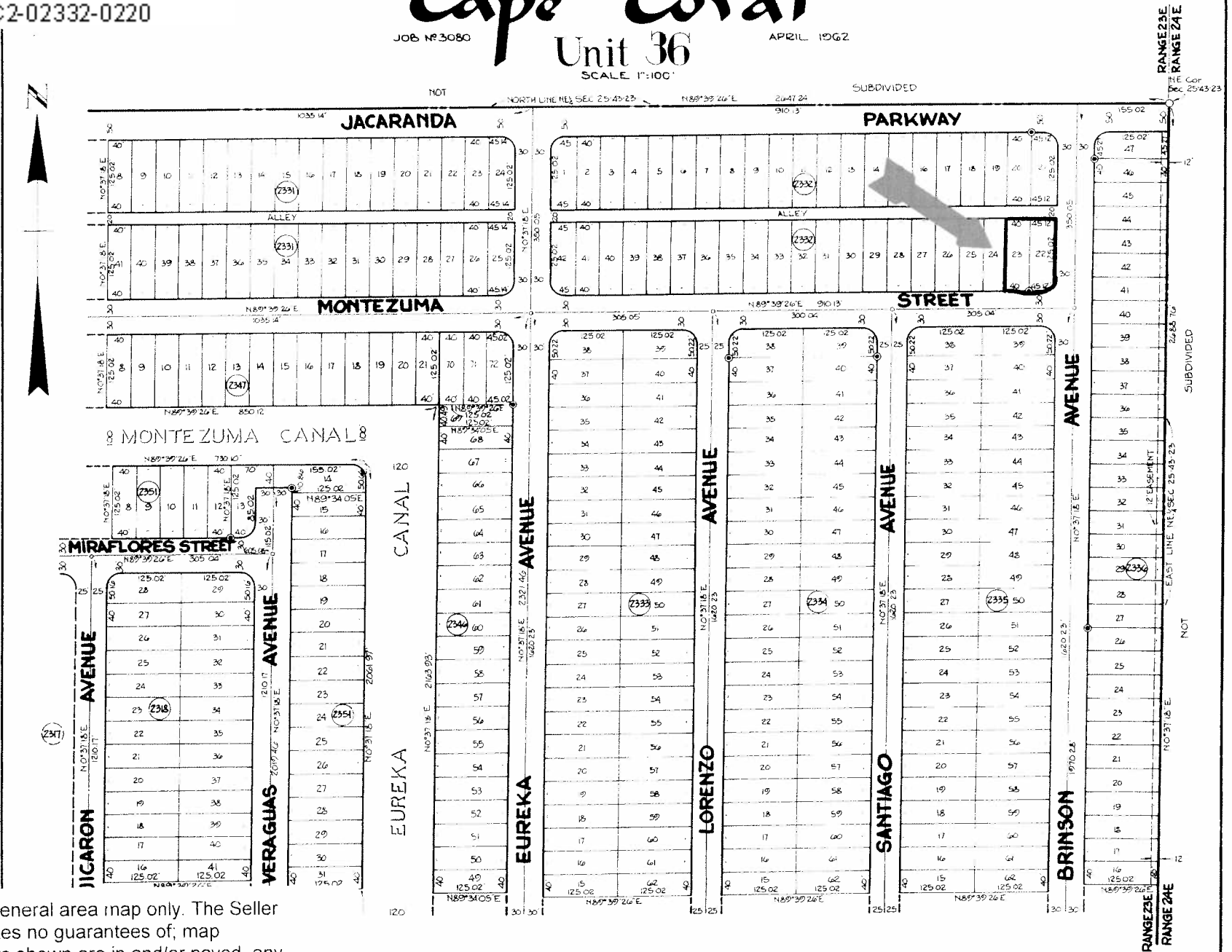
Cape Coral

Unit 36
 SCALE 1"=100'

JOB # 3080

APRIL 1962

PLAT BOOK 16 PAGE 130



RELATIONS
 BY T.C.P.
 ED BY L.C.
 DVED BY ka

This is a copy of a general area map only. The Seller and Auctioneer makes no guarantees of, map accuracy, any streets shown are in and/or paved, any rights of access or other land use restrictions. Personally inspect the parcel prior to the auction.