

Item # 41

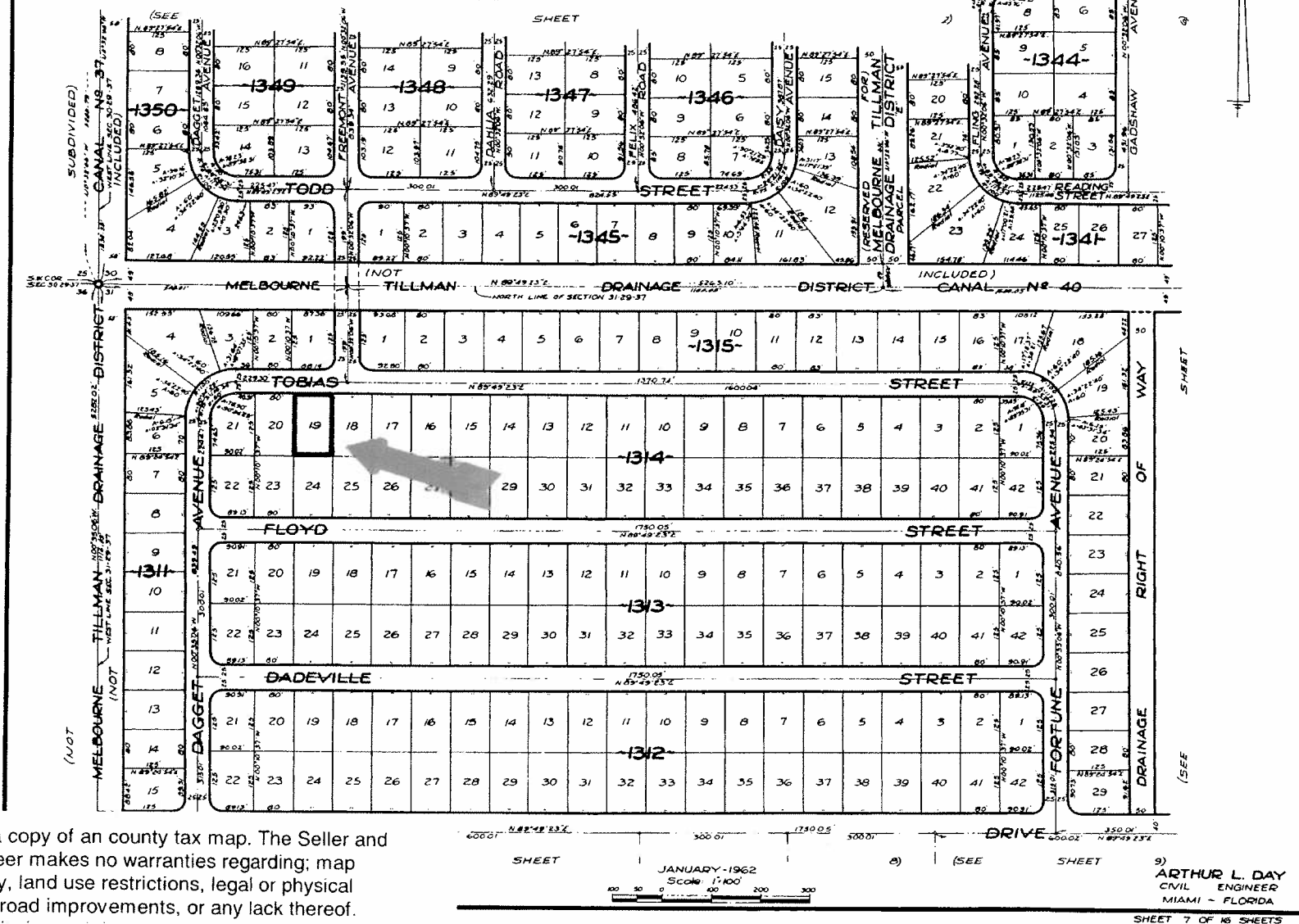
Brevard County, Florida
APN: 29-37-31-GV-01314.0-0019.00

MALABAR WENTY FIVE

A RESUBDIVISION OF PORTIONS OF THE FLORIDA INDIAN RIVER
LAND COMPANY, PLAT BOOK 1, PAGE 165, IN SECTIONS 29,30,31 AND 32,
TOWNSHIP 29 SOUTH, RANGE 37 EAST
CITY OF PALM BAY, BREVARD COUNTY, FLORIDA

SHEET 7 OF 16 SHEETS

PLAT BOOK 16
PAGE 74



This is a copy of an county tax map. The Seller and Auctioneer makes no warranties regarding; map accuracy, land use restrictions, legal or physical access, road improvements, or any lack thereof.