

Item # 21

Lee County, Florida
APN: 33-43-23-C1-03890-0160

Cape Coral

Unit 53

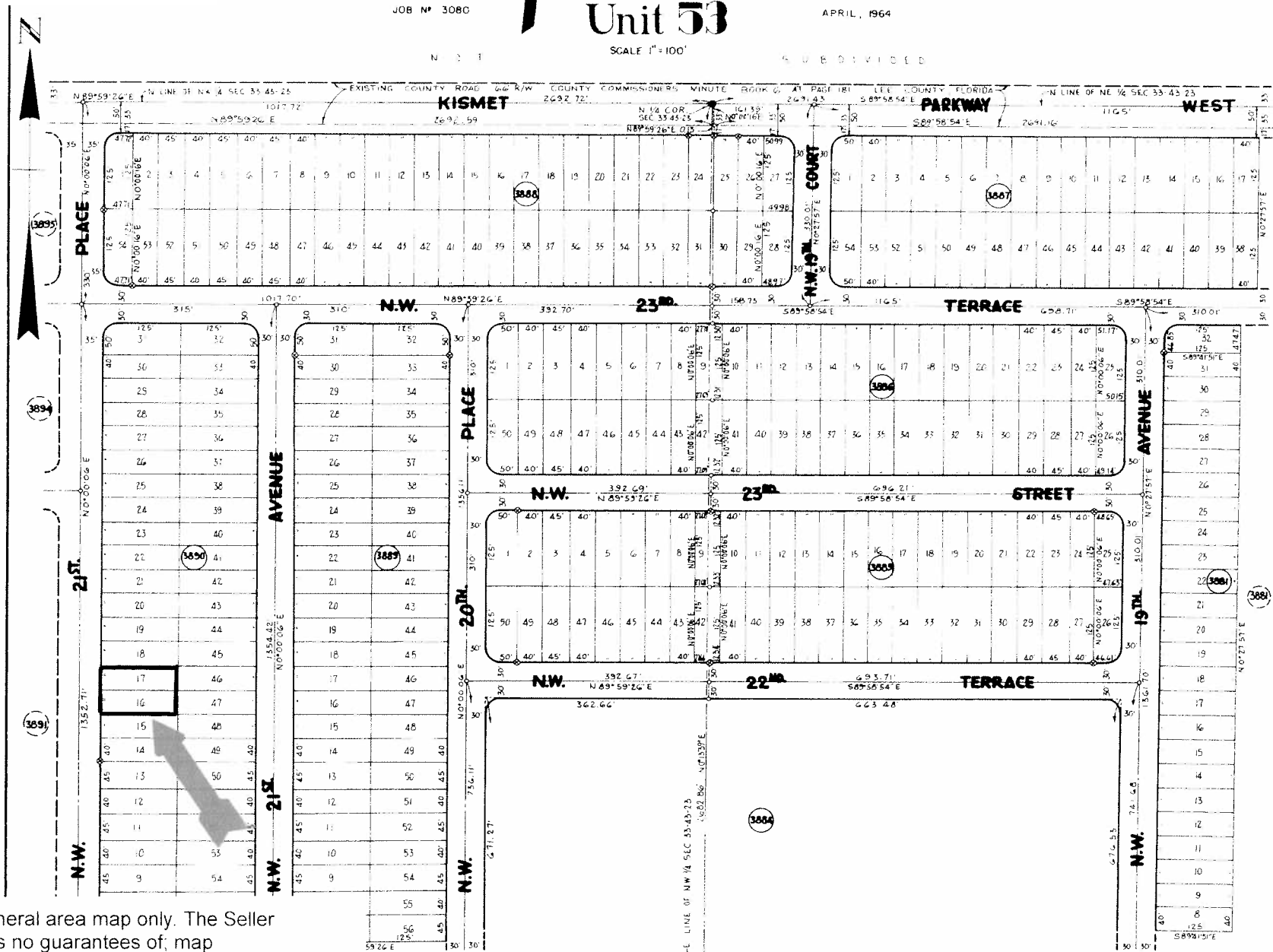
JOB # 3080

APRIL, 1964

N 31

SCALE 1"=100'

SUBDIVIDED



CALCULATIONS BY: C. W. H. G.
 DRAWN BY: P. H. E. L. B.
 CHECKED BY: R. D. M.
 APPROVED BY: *[Signature]*

This is a copy of a general area map only. The Seller and Auctioneer makes no guarantees of; map accuracy, any streets shown are in and/or paved, any rights of access or other land use restrictions. Personally inspect the parcel prior to the auction.