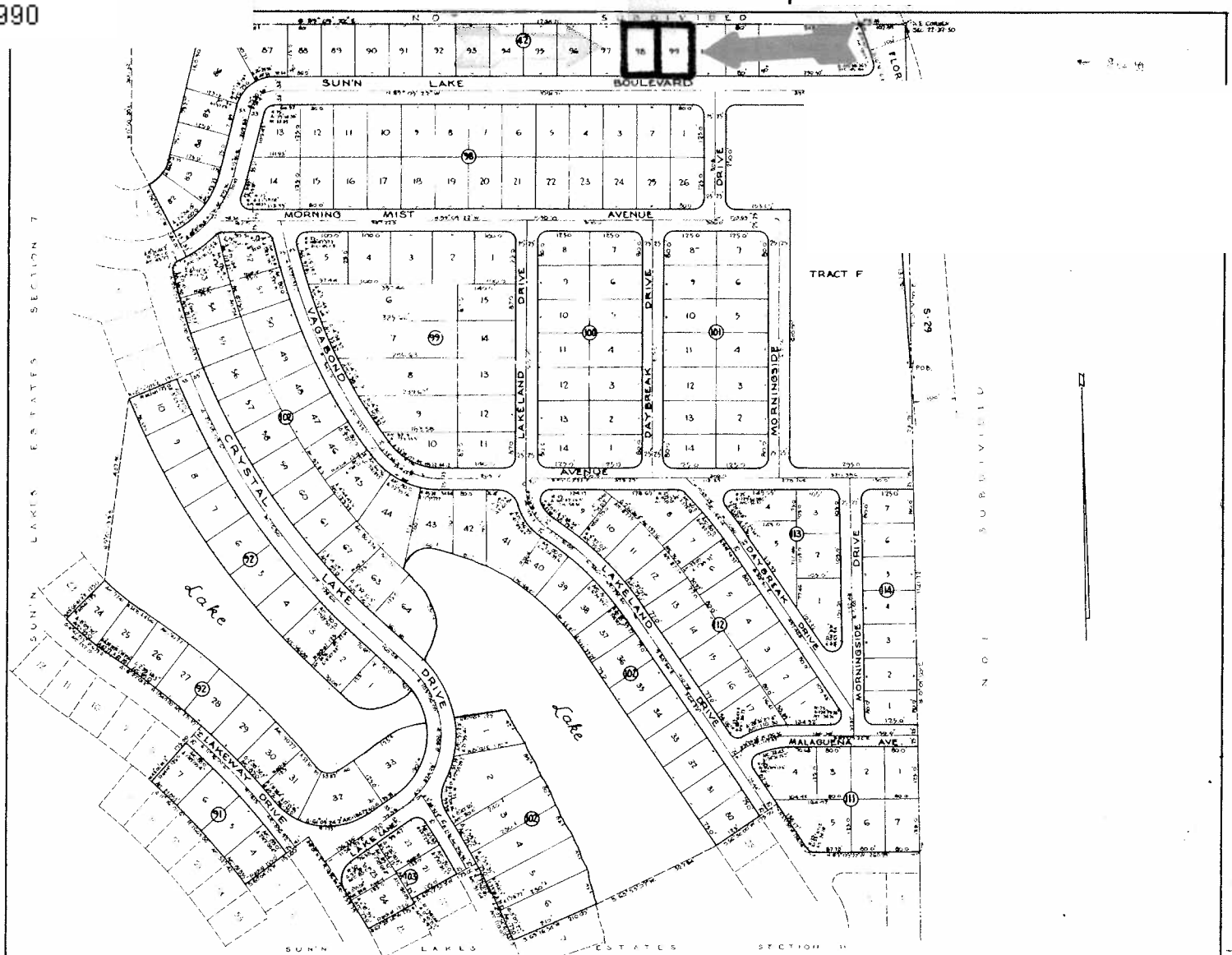


Item # 12

Highlands County, Florida
APN: C-22-37-30-100-0420-0990

Page 48 of 111
Submittal



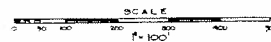
SUN'N LAKES ESTATES SECTION 10

A SUBDIVISION IN SECTION 22, TWP. 57S., ROL. 50E., HIGHLANDS COUNTY, FLORIDA.

1.75' PUBLIC UTILITY EASEMENT ALONG
3' EVERY LOT SHOWN ON THIS PLAT

M. S. GARRIG
MIAMI, FLORIDA

CIVIL & CONSULTING ENGINEER



Engineer's Note:
 PRM DENOTES PERMANENT REFERENCE MONUMENT SET
 DIMENSIONS OF CORNER LOTS ARE TO P.C. OF CURVES EXCEPT WHERE OTHERWISE INDICATED.
 ALL CORNER RICH ARE 15' UNLESS OTHERWISE INDICATED.
 BOUNDRIES SHOWN REFER TO AN ASSUMED MERIDIAN.

This is a copy of a general area map only. The Selier and Auctioneer makes no guarantees of: map accuracy, any streets shown are in and/or paved, any rights of access or other land use restrictions. Personally inspect the parcel prior to the auction.