

169 Item # 8

Citrus County, Florida

APN: 20E-19S-29-0010-03570-0220

S HIGHLANDS WEST

CITRUS COUNTY, FLORIDA

SHEET 6 OF 15 SHEETS

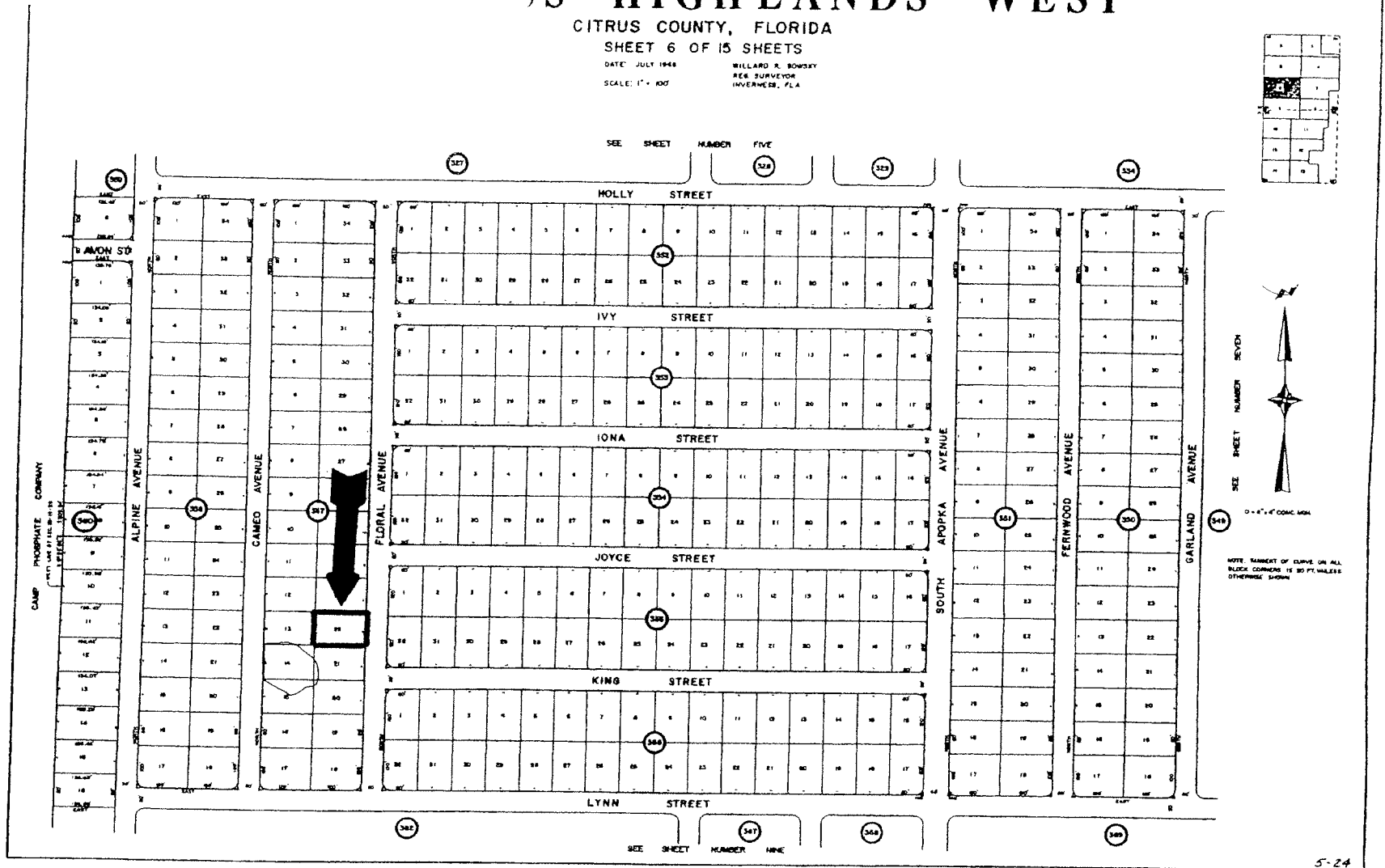
DATE: JULY 1948

WILLARD R. BOWEN

SCALE: 1" = 100'

REG. SURVEYOR

INVERNESS, FLA.



PB5 PG24

This is a copy of an county tax map. The Seller and Auctioneer makes no warranties regarding; map accuracy, land use restrictions, legal or physical access, road improvements, or any lack thereof. Personally inspect the parcel prior to the auction.